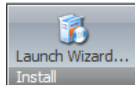


CLOUDWORDS FOR SITECORE INSTALLATION GUIDE

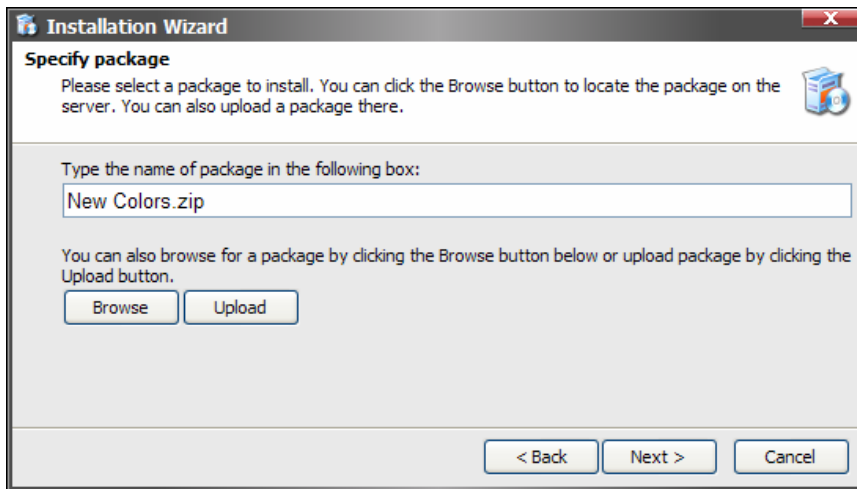
LAUNCH INSTALLATION WIZARD

The installation wizard is used to install packages from zip files. It can be accessed in two ways:

1. Launch Wizard button in the Install chunk:
2. Sitecore » Development Tools » Installation Wizard.

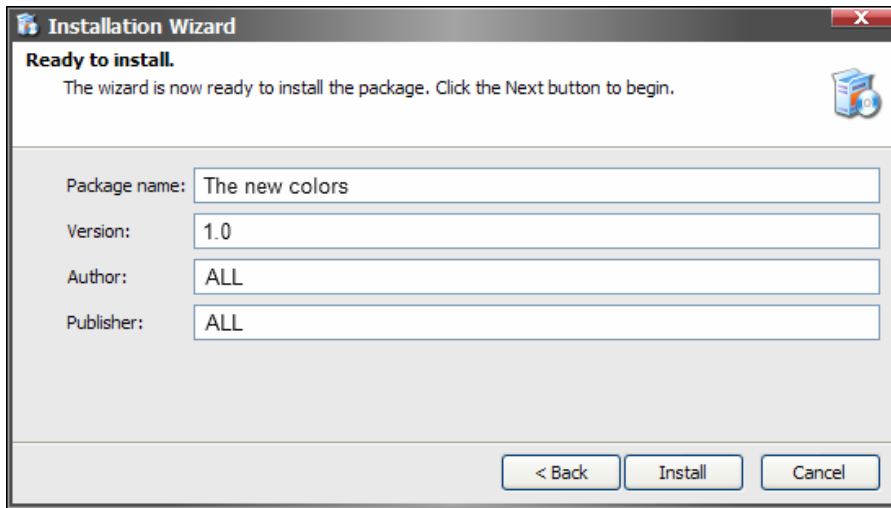


SPECIFY PACKAGE



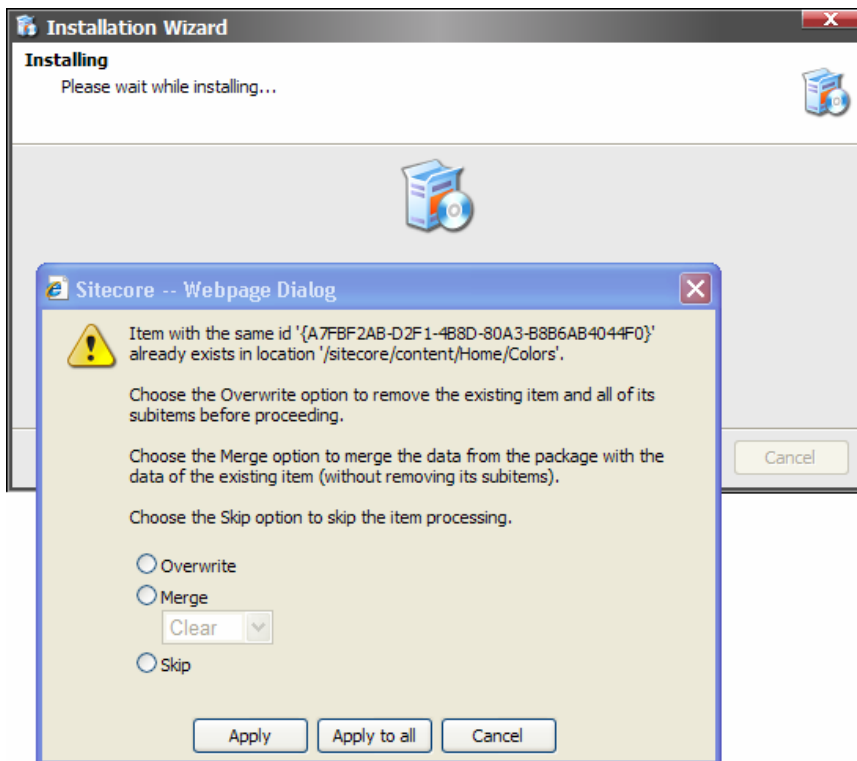
Use the Browse button to browse for an existing package or the Upload button to upload the new one. Packages are looked up in the folder specified in **web.config**.

REVIEW THE PACKAGE INFO



Review the package metadata and click Install.

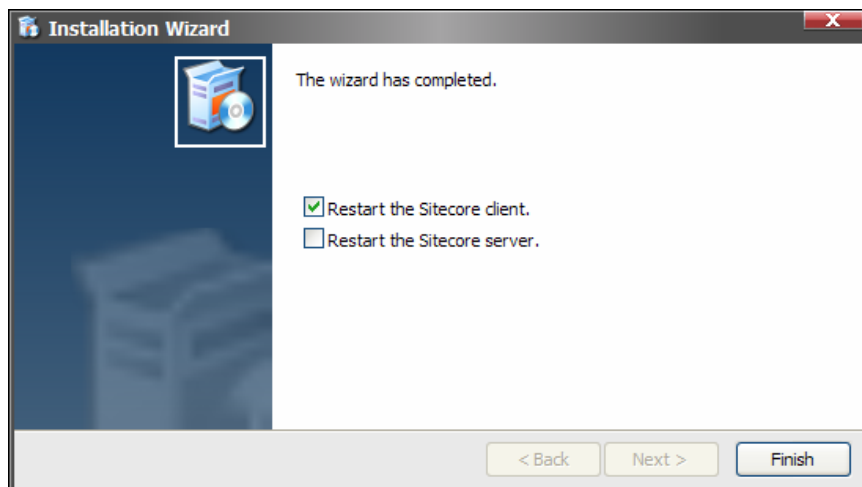
INSTALLATION PROCESS WINDOW



If there are items with the same ID in the package and in the target installation, dialogue windows may appear which allow you to choose how to resolve the collision. The collision will be resolved automatically if the installation settings were set for the items during package creation.

Note: if a parent for an item being installed does not exist, it will be created based on the Folder template and will not contain any fields.

RESTART



In the final window you can choose to restart Sitecore client or server.